

TrÉbon™ Tunnel Lights



50W Smart Tunnel Light
LX-TN-50

FEATURES

- Flexible, modular design
- Multiple choice of optical lenses
- Advanced, vortex air flow thermal management
- Easy, low cost maintenance and repair
- UL, CUL certified to wet location

TYPICAL APPLICATIONS

- Suitable for Tunnels

SPECIFICATIONS

PERFORMANCE

LED Chip	CREE XT-E
Lumen Output (IES)	4,401 lm
Power Consumption	50 W
Efficacy (IES)	88 lm/W
Beam Angle	85/135°
Color Temperature	4500~5500K (2500~5500K Optional)
CRI	≥70
Lumen Maintenance	L70>150,000 hours (Calculated Using TM-21 Calculator)
Input Voltage	100-277 VAC (Dimming Optional)
Power Factor	0.95 minimum
Surge Protection	Per IEC 61000-4-5
EMI	EMC Per EN 55015

ENVIRONMENTAL

IP Rating	IP65
Operating Temperature	-30 to 55°C (-22 to 131°F)
Humidity	15% to 90% RH

PHYSICAL

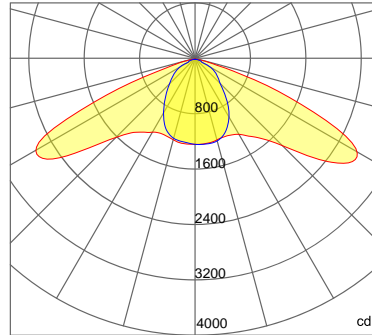
Dimensions (L×W×H)	7.9×7.9×6.9 in
Weight	3.6 kg (7.9 lbs)
Mounting Options	Universal Hanging Bracket, Surface Mount
Fixture Material	Aluminum Alloy

WARRANTY

5 Years

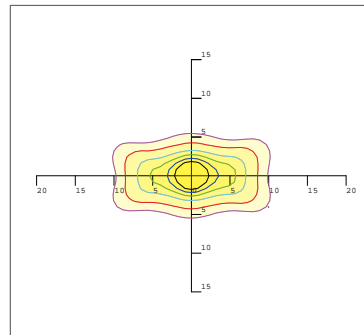
Photometrics

85/135 DEGREE LENS (Clear/Frosted)



— 0.0~180.0
— 90.0~270.0

Beam Angle (50% max)	85x135 DEG
Field Angle (10%)	130x150 DEG
Luminous Flux (IES)	4,401 lm
Light Efficacy (IES)	88 lm/W
NEMA Type	7H x 7V
BUG Rating	B2-U1-G2
UGR	17/30
IES Classification	Type II
Cutoff Classification	Semi-Cutoff

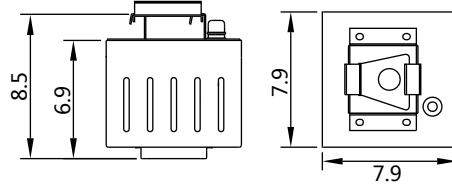
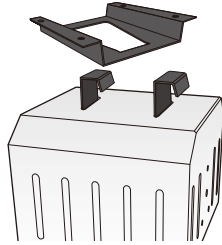


Mounting Hight 4m, 0 Tilt,
50LUX-5LUX

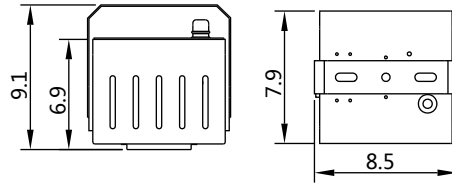
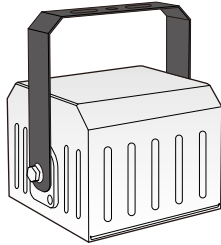
Illumination-85/135 Degree Beaming Angle		
Height	Rectangular Light Spot	LUX
3m	5 x 14m	93LUX
4m	7 x 19m	61LUX
5m	9 x 24m	42LUX
6m	11 x 29m	30LUX
7m	13 x 34m	23LUX

Mounting Options

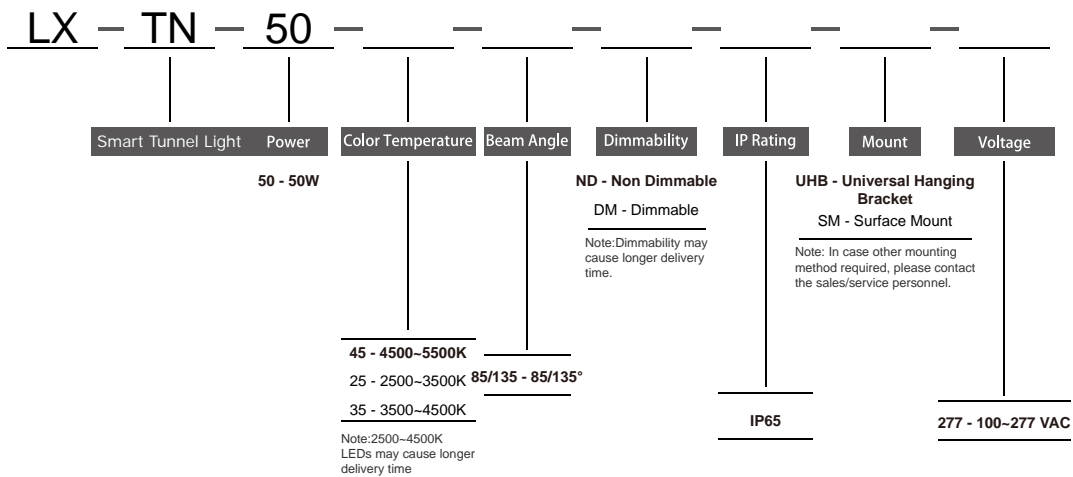
Surface Mount



Universal Hanging Bracket



Ordering Information



Ordering Example:
LX-TN-50-45-85/135-ND-IP65-UHB-277

