

TrÉbon™ LED Flood



100W Smart Flood Light
LX-FL-100

FEATURES

- Flexible, modular design.
- Variety of optical lenses
- Advanced, vortex air flow thermal management.
- Easy, low cost maintenance and repair.

TYPICAL APPLICATIONS

- Car Lots
- Walkways
- Security Lighting
- Roof Tops

SPECIFICATIONS

PERFORMANCE

LED Chip	CREE XT-E
Lumen Output (IES)	10,500 lm
Power Consumption	100 W
Efficacy (IES)	105 lm/W
Beam Angle	120°, 85/135°, 70/150°, 30°, 45°, 90°
Color Temperature	5000K (3000 or 4000K Optional)
CRI	≥70
Lumen Maintenance	L70>150,000 hours (Calculated Using TM-21 Calculator)
Input Voltage	100-277 VAC (Dimming Optional)
Power Factor	0.95 minimum
Surge Protection	Per IEC 61000-4-5
EMI	EMC Per EN 55015

ENVIRONMENTAL

IP Rating	IP65
Operating Temperature	-30 to 50°C (-22 to 122°F)
Humidity	15% to 90% RH

PHYSICAL

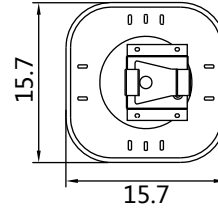
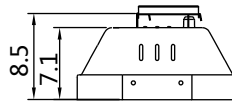
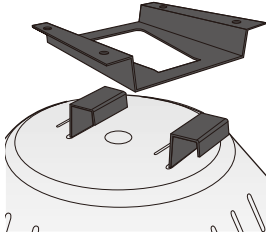
Dimensions (L×W×H)	15.7×15.7×7.1 in
Weight	7.4 kg (16.3 lbs)
Mounting Options	Universal Hanging Bracket, Surface Mount, Slip Fitter Mount, Mounting Bracket c/w Clapping Ring
Fixture Material	Aluminum Alloy

WARRANTY

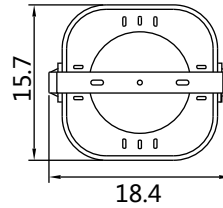
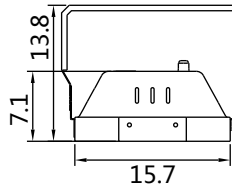
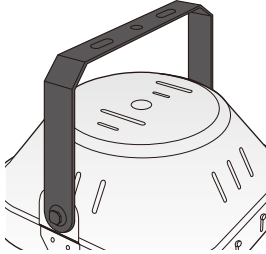
5 Years

Mounting Options

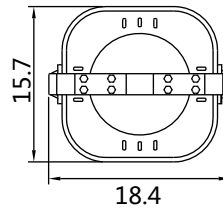
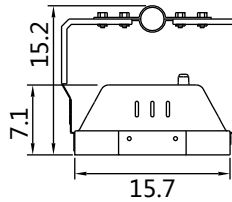
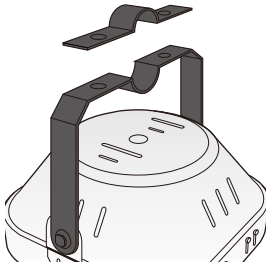
Surface Mount



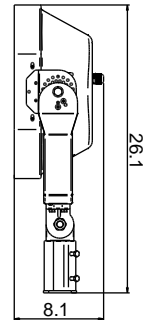
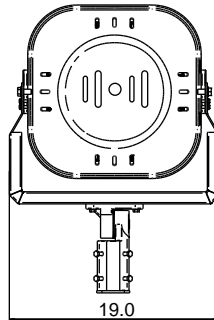
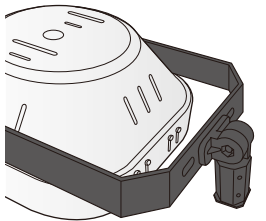
Universal Hanging Bracket



Mounting Bracket c/w Clapping Ring



Slip Fitter Mount



Ordering Information

Smart Flood Light	Power	Color Temperature	Beam Angle	Dimmability	IP Rating	Mount	Voltage	Housing Color
	100 - 100W			ND - Non Dimmable DM - Dimmable		UHB - Universal Hanging Bracket SM - Surface Mount MBCR - Mounting Bracket c/w Clapping Ring SF - Slip Fitter Mount		01-RAL9017 Black 02-RAL9010 White 03-RAL9022 Silver 04-RAL7045 Gray 05-RAL7022 Light Brown 06-RAL8019 Bronze
		50 - 5000K 30 - 3000K 40 - 4000K	85/135 - 85/135° 30 - 30° 45 - 45° 90 - 90° 120 - 120°		IP65		100-277 320-480	

Ordering Example: LX-FL-100-50-85/135-ND-IP65-UHB-100-277

