

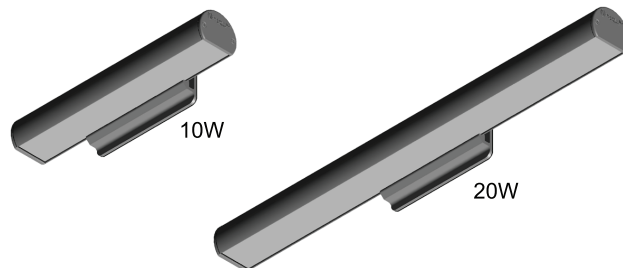


EMLED SERIES EUE

Mullion Mount Outdoor Emergency Egress Lighting



PROJECT: _____
FIXTURE TYPE: _____
LOCATION: _____
CONTACT/PHONE: _____



SPECIAL FEATURES

- Very low profile extruded aluminum housing and mount bracket blend seamlessly with structural metal frames
- Remote power supply for 10W and 20W BB and AC model single fixtures
- Option for 20 watt models to operate for 2 hours in emergency mode
- Options for mount bracket height, from 2" to 5"
- Standard finishes include Brushed Aluminum, Satin White, Bronze or Black. Custom colors available on request
- Custom satin finishes for extended outdoor use are available to match any surface
- IP66 housing seals against heavy water spray and fine dust
- Universal side or top mount
- Wide lighting distribution designed for entrance walkways
- 10W or 20W emergency power models
- Optional normal-on switch allows timed control of night lighting
- Self-Test Diagnostics is optional for integral battery models.
- Certified IP66 housing withstands multi direction water spray and fine dust ingress
- Wall mount version available (see Series EAE)
- Standard CRI 5000K, with optional color corrections filters for 2900K, 3200K and 3800K.



PRODUCT DESCRIPTION

Linear LED outdoor egress with both emergency lighting and night lighting function. The EUE series is designed to mount directly on mullion frames used in typical glass panel entrance structures, with vertical mounting surface as small as 2". High efficiency LEDs and full 90° cut-off provide uniform emergency and night lighting on the extended egress pathway. All models are outdoor rated, UL wet location, ADA compliant, and exceed requirements of UL Standard 924 and NFPA 101. Designed and manufactured in the USA, complies with ARRA (American Recovery and Reinvestment Act) and Buy American requirements.

ORDERING INFORMATION

Model	Operation	Power	Housing Color	Mount	Options
EUE	BB = Battery Backup	10 = 10 Watts Emergency	BL = Black	T = Top	DG = Self-test diagnostics (BB models only)
	(includes RPS)	and normal on power	W = Satin White	W = Wall	SD = Night lighting control switch for models
	AC = No Battery	20 = 20 Watts emergency	A = Aluminum		with DG option (120-277VAC)
	(includes RPS)	and normal on power	DB = Dark Bronze		SB120 = Night lighting control switch for
			X = Custom		standard BB models (120VAC)
					SB277 = Night lighting control switch for
					standard with BB models (277VAC)
					REC = 20W RPS panel recessed mount
					2EM = 2 hrs emergency operation for BB models
					CW1 = Color temp. - 3800K
					CW2 = Color temp. - 3200K
					CW3 = Color temp. - 2900K
					DAC = Dual AC input
					2HT = 2" Mount Bracket height
					5HT = 5" Mount Bracket height

EXAMPLE: EUEBB10AW-DG



EMLED SERIES EUE

Mullion Mount Outdoor Emergency Egress Lighting



PROJECT: _____
FIXTURE TYPE: _____
LOCATION: _____
CONTACT/PHONE: _____

CONSTRUCTION

- Extruded aluminum lamp housing 2" diameter, with gasketed mount bracket only
- 2 1/2"Ht that includes a waterproof compression seal for universal wall or top mount.
- Available models include:
 - BB and AC: Single fixtures powered from a Remote Power Supply
 - Supply AC: 120/277 VAC input, with or without battery
- Wet location listed, UL924 and certified IP66
- Gasketed, molded end caps and Sealed acrylic lens
- Stainless steel hardware

LIGHTING

- Lamps connected in parallel allow continuous lighting after failure of one lamp, meeting NEC and NFPA requirements.
- Standard output color 5000K. Optional outputs available 2900K, 3200K and 3800K.
- Dual function available for emergency or normally -on operation.
- Standard Operating Temperature
 - BB: -20C to 40C (-4F to 104F)
 - AC: -20C to 40C (-4F to 104F)

ELECTRONICS

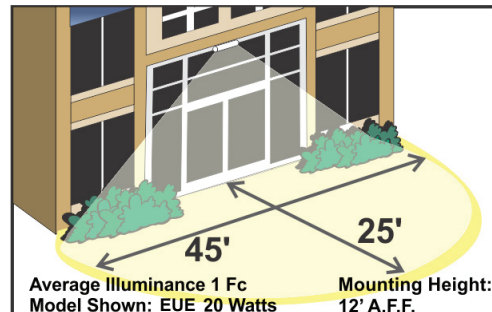
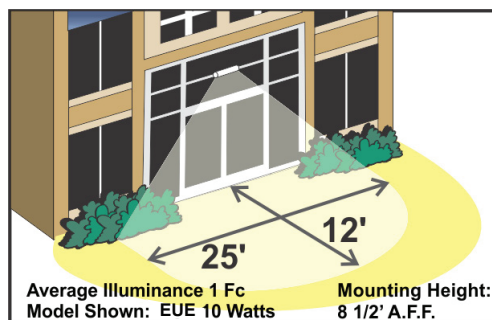
- Self-Test/Self-Diagnostic operation is optional for BB models with the Remote Power Supply.
- Line latch circuit prevents unwanted emergency activation at installation.
- Low Voltage Disconnect prevents deep battery discharge

CODES

- Manufactured and tested to UL Standard 924, NFPA Life Safety Code 101, and certified to IP66.

WARRANTY

- 10 year total customer satisfaction warranty.



NOTE: FOR REFERENCE ONLY. STANDARD REFLECTANCES 80/50/20. MULE IS NOT RESPONSIBLE FOR SPECIFIC CONDITIONS THAT MAY ALTER THE RESULTS.



Self-test Diagnostic Functions (BB models)

STATUS	LED DISPLAY
Normal Full Charge	● GREEN ON
Normal Fast Charge	● ORANGE ON
Failed Battery	● ● RED FLASH FAST
Failed Lamp	● ● GREEN FLASH
Failed Transfer	● ● ORANGE FLASH
Failed Charger	● ● RED FLASH SLOW



EMLED SERIES EUE

Mullion Mount Outdoor Emergency Egress Lighting



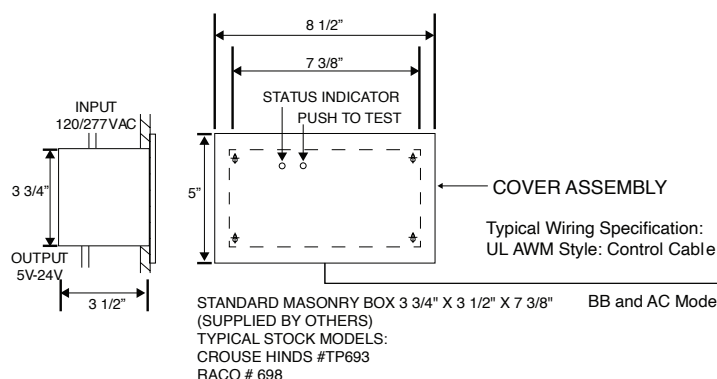
PROJECT: _____
FIXTURE TYPE: _____
LOCATION: _____
CONTACT/PHONE: _____

SUGGESTED SPECIFICATIONS

Fixtures: Supply and install the EMLED Series EUE Mullion Mount or Series EAE Wall Mount emergency lighting fixture manufactured by Mule Lighting Inc. The fixture shall be listed for installation in wet locations in compliance with UL 924 and IP66 standards and shall be capable of operating either from Utility power at 120/277VAC or remote power supply Series RPS. Upon loss of AC building power, emergency models shall operate for a minimum of 90 minutes in compliance with UL Standard 924 and NFPA LSC 101.

MOUNTING DATA

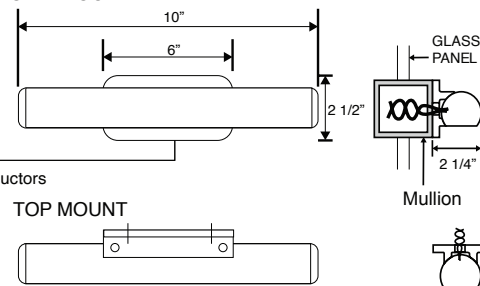
Remote Power Supply (RPS) - Included Standard 10 Watt AC & BB Models



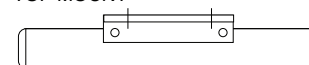
Max. wiring length from RPS to fixture

Wiring Size AWG	LENGTH (FT)	LENGTH (FT)
	EUEBB10	EUEBB20
#22	NA	20
#20	12	40
#18	25	60
#16	50	100
#14	75	160
#12	125	250

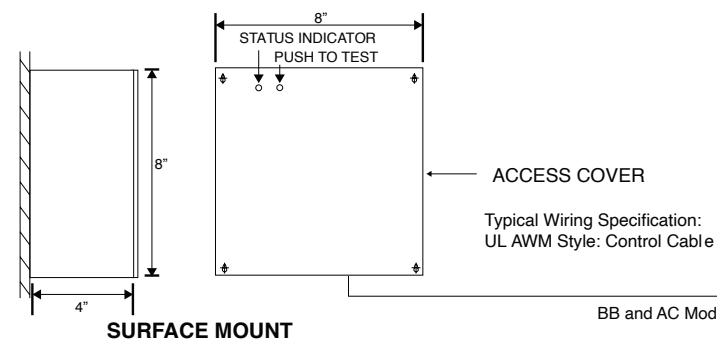
SIDE MOUNT



TOP MOUNT

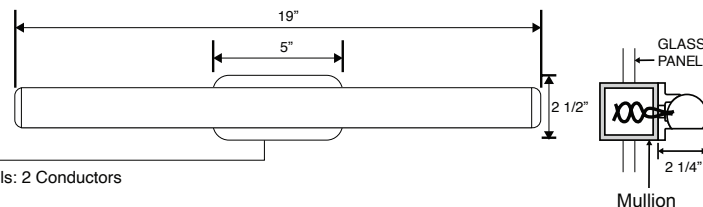


Remote Power Supply (RPS) 20 Watt AC & BB Models

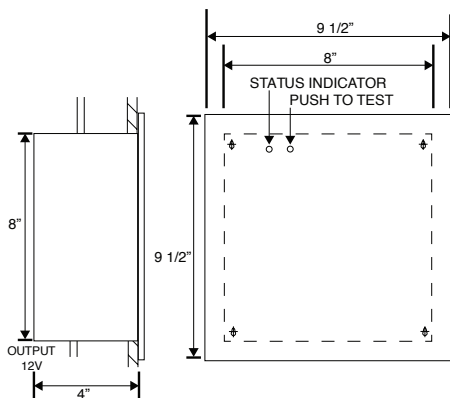
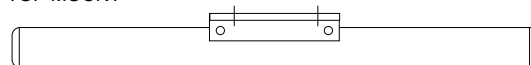


SURFACE MOUNT

SIDE MOUNT



TOP MOUNT



RECESS MOUNT (OPTION REC)

Specifications and dimensions subject to change without notice.