



# MF40-LP500



LOW-PROFILE FLUORESCENT EMERGENCY BALLAST



PROJECT:
FIXTURE TYPE:
LOCATION:
CONTACT/PHONE:

## PRODUCT SPECIFICATIONS

### APPLICATION

The MF40-LP500 low-profile fluorescent emergency ballast works in conjunction with the AC ballast to convert new or existing fluorescent fixtures into emergency lighting. The emergency ballast consists of a high-temperature nickel cadmium battery, charger and electronic circuitry in one compact case. The MF40-LP500 can Operate one 21W-28W T5 fluorescent lamp. Refer to lamp compatibility chart for a complete list of lamps.. It is also compatible with most electronic and dimming AC ballasts. If used in an emergency-only fixture, no AC ballast is necessary. This ballast is not suitable for use in air handling heated air outlet fixtures, and wet or hazardous location fixtures. For information about specific lamp and ballast compatibility, please consult the factory. This ballast has additional features, such as time-delay enhancement and open circuit isolation that enables the emergency battery pack to function smoothly with 'End-of-Lamp-Life' circuitry in newer AC ballasts. This would provide an additional level of unit production from over-voltage caused by an absence of lighting load.

### OPERATION

When AC power fails, the MF40-LP500 immediately switches to the emergency mode, keeping one lamp illuminated at a reduced lumen output for a minimum of 90 minutes. When AC power is restored, the ballast automatically returns to the charging mode.

### INSTALLATION

The MF40-LP500 does not affect normal fixture operation and may be used with either a switched or unswitched fixture. If a switched fixture is used, an unswitched hot lead must be connected to the emergency ballast. The emergency ballast must be fed from the same branch circuit as the AC ballast. The MF40-LP500 may be installed inside or on top of the fixture. Installation is not recommended with fixtures where the ambient temperature may fall below 0°C for extended periods.

### UL AND CODE COMPLIANCE

The MF40-LP500 has been tested by Underwriters Laboratories in accordance with the standards set forth in UL 924, "Emergency and Power Equipment," and is UL Listed for factory or field installation. Emergency illumination time exceeds the National Electric Code (NEC), Life Safety Code (NFPA-LSC) and UL 90-minute requirements.

### BATTERY

Since high temperatures exist in fluorescent fixtures, the MF40-LP500 uses a specially constructed, high-temperature nickel cadmium battery. This battery requires no maintenance, and has a life expectancy of 7 to 10 years.

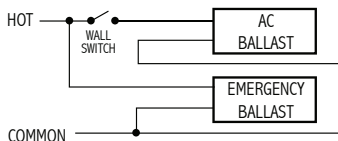
### EMERGENCY ILLUMINATION

The MF40-LP500 produces 450-500 lumens initial emergency output. During emergency illumination, one lamp is illuminated, even if installed with a multi-lamp AC ballast. Emergency lumen output will be less with a compact fluorescent lamp.

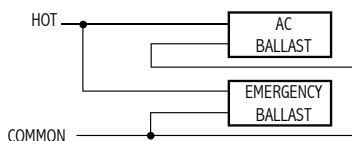
### SPECIFICATION

Emergency lighting shall be provided by using a standard fluorescent fixture equipped with MF40-LP500 emergency ballast. This emergency ballast shall consist of a high-temperature, maintenance-free nickel cadmium battery, charger and electronic circuitry contained in one 14.2" x 1.1" x 1.2" metal case. A solid-state charging indicator light to monitor the charger and battery, a single-pole test switch, and installation hardware shall be provided. The emergency ballast shall be capable of operating one 21W-28W T5 fluorescent lamp at reduced illumination in the emergency mode for a minimum of 90 minutes. The MF40-LP500 shall produce 450 to 500 lumens initial emergency light output, have 2.5 Watts of input power, a 9 Watt-hour battery capacity, and comply with emergency standards set forth by the current NEC. The emergency ballast shall be UL Listed for installation inside, on top of, or remote from the fixture, warranted for a full year from date of purchase.

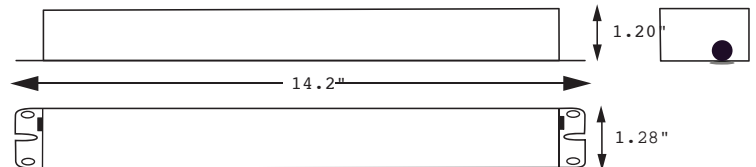
### SWITCHED



### UNSWITCHED



Primary circuit only. Lamp leads not shown.





# MF40-LP500



LOW-PROFILE FLUORESCENT EMERGENCY BALLAST

PROJECT:
FIXTURE TYPE:
LOCATION:
CONTACT/PHONE:

### WARRANTY

Model MF40-LP500 is warranted for one full year from date of purchase. This warranty covers only properly installed emergency ballasts used under normal conditions. For the warranty period Mule will, at its option, repair or replace without charge a defective emergency ballast, provided it is returned to the factory transportation prepaid, and our inspection determines it to be defective under terms of the warranty. Repair or replacement, as stated above, shall constitute the purchaser's exclusive warranty, which does not extend to transportation, installation, labor or any other charges; nor does it apply to any equipment of another manufacturer used in conjunction with the emergency ballast.

### PRODUCT SUMMARY

**UL LISTED**  
Factory or Field  
Installation

**ILLUMINATION**  
90 Minutes

**INITIAL LIGHT OUTPUT**  
450-500 Lumens

**FULL WARRANTY**  
1 Year

**DUAL VOLTAGE INPUT**  
120/277 VAC  
60 Hz

**AC INPUT CURRENT**  
127mA/120mA

**AC INPUT POWER RATING**  
2.5 Watts

**TEST SWITCH**  
Single pole

**BATTERY**  
High-Temperature  
Maintenance-Free  
Nickel-Cadmium Battery  
7-10 Year Life Expectancy

**BATTERY CHARGING CURRENT**  
127mA/120mA

**RECHARGE TIME**  
24 Hours

**CHARGING INDICATOR LIGHT**  
LED

**TEMPERATURE RATING (AMBIENT)**  
0°C TO +55°C  
(32°F TO 131°F)

**DIMENSIONS**  
14.2" x 1.1" x 1.2"  
Mounting center 13.5"

**WEIGHT**  
1.36 lbs (0.6 kg)

LAMP	INITIAL LUMENS
	1-LAMP
T5 21W	425
T5 28W	500