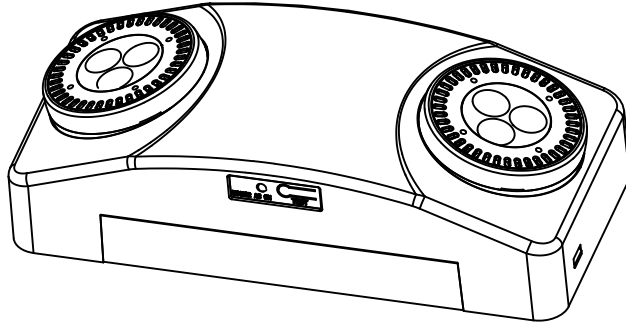


INSTALLATION INSTRUCTIONS FOR TSR EMERGENCY LIGHT

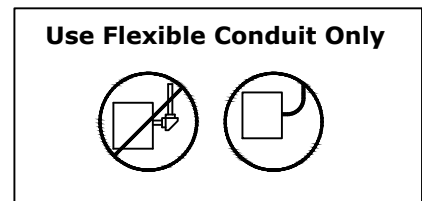


IMPORTANT SAFEGUARDS READ AND FOLLOW ALL SAFETY INSTRUCTIONS

When using electrical, basic safety precautions should always be followed including the following.

1. Disconnect power at fuse or circuit breaker before installing or servicing.
2. Do not use outdoors.
3. Do not mount in hazardous locations, or near gas or electric heaters.
4. Do not let power cords touch hot surface.
5. Equipment should be mounted in locations and at heights where it will not be subjected to tampering by unauthorized personnel.
6. The use of accessory equipment not recommended by the manufacturer may cause an unsafe condition.
7. Do not use this equipment for other than intended use.
8. All servicing should be performed by a qualified personnel only.
9. After installation is finished , please charge battery for 24 hours.

SAVE THESE INSTRUCTIONS



MAINTENANCE

Battery have to recharge if product keep in stock over 12 months, detail manual refer "BATTERY STOCK AND RECHARGE GUIDELINE". We recommend that the equipment is tested regularly in accordance with local codes. Replace the batteries as needed if discharge time do not achieve 90 minutes.

OPERATION

Press the test button. The LED heads will turn on and the LED indicator light will turn off.
Release the test switch so that the LED indicator will turn on and the LED heads will turn off.

TROUBLE SHOOTING GUIDE

If LED heads or LED indicator does not illuminate, check the following:

1. Check AC supply - verify that unit has 24 hours AC supply.
2. Battery connection..
3. Discharge the battery and then charge the battery for 24 hours and retest..
4. If above trouble shooting hints do not solve the problem, contact factory for assistance.

Mounting Instructions

Wall Mount-Back Power Feed (see Fig 2)

1. Using flat screw driver pry off front cover from back plate (see Fig 1).
2. Remove appropriate knockout in back plate.
3. Feed wires through the hole.
4. Secure backplate to J-box.
5. Connect the fixture wires to the power supply wires using the wire nuts provided. Connect the white wire to neutral, connect the black wire to the hot lead. Cap the unused lead. Press the wires into the J-box (Refer to Wiring diagram below).
6. Connect remote wires if this item with remote capability. Refer to below instruction for remote wires.
7. Plug battery male connector into battery female connector on PCBA.(see Fig 2).
8. Snap the front cover on the back plate.
9. Restore power and press test button. LED heads will turn on.
10. Adjust the lamp heads direction as per needs.

Wall Mount (Top Power Feed) (see Fig 3)

1. Open front cover and remove top knockout on the top flange of fixture.
2. Secure conduit (or surface raceway) to knockout and feed wires.
3. Remove appropriate knockout on back plate and mount to wall.
4. Refer to above 5 - 10 steps in Wall Mount-Back Power Feed.

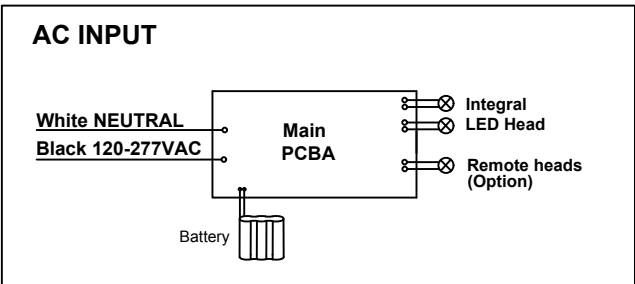
Ceiling Mount (see Fig 4)

Refer to above **Wall mount-Back Power Feed** instruction.
Here are some differences:
Mount back plate on the ceiling surface instead of wall surface.
Feed building AC supply wire through back plate then connect to fixture power supply wires using wire nuts provided.

Connecting Remote head (option)

Connect extended remote head wires to remote wires using wire nut.
yellow is positive(+), purple is negative(-). 9V 5.4W max. remote capability for this product.

Wiring Diagram



Open fixture

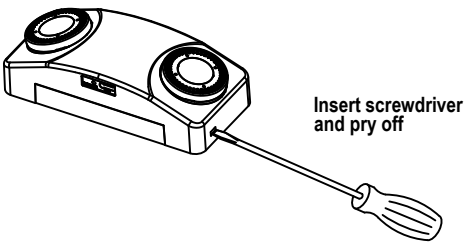


Fig 1

Wall mount-Back Power Feed

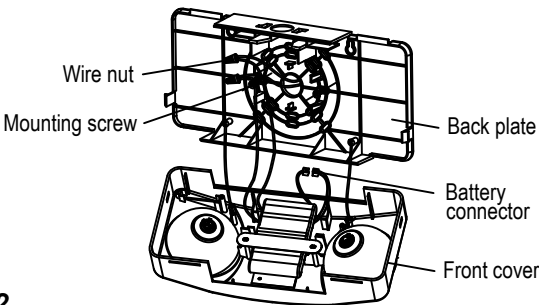


Fig 2

Wall mount-Top Power Feed

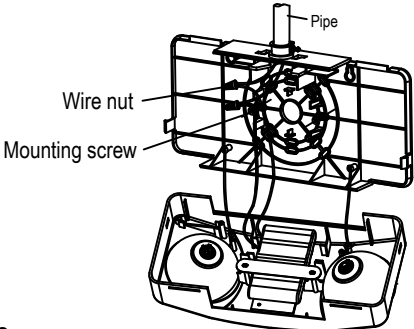


Fig 3

Ceiling mount-Top Power Feed

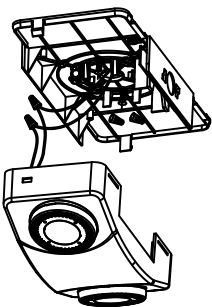


Fig 4

Mounting height

TSR-W
TSR-HO-W

Max. mounting height 35ft
Max. mounting height 50ft